

Reopening Update

October 15, 2020- Governing Board Presentation

Stakeholder Feedback

Families and Staff

- Survey issued September 19-23, 2020
- Sent to all employees (519 participated)
- Sent to all parents/guardians (3,470 participated)*

Meetings

- Santa Clara County School Superintendents
- CUSD labor leaders and administrators
- CA State and County officials

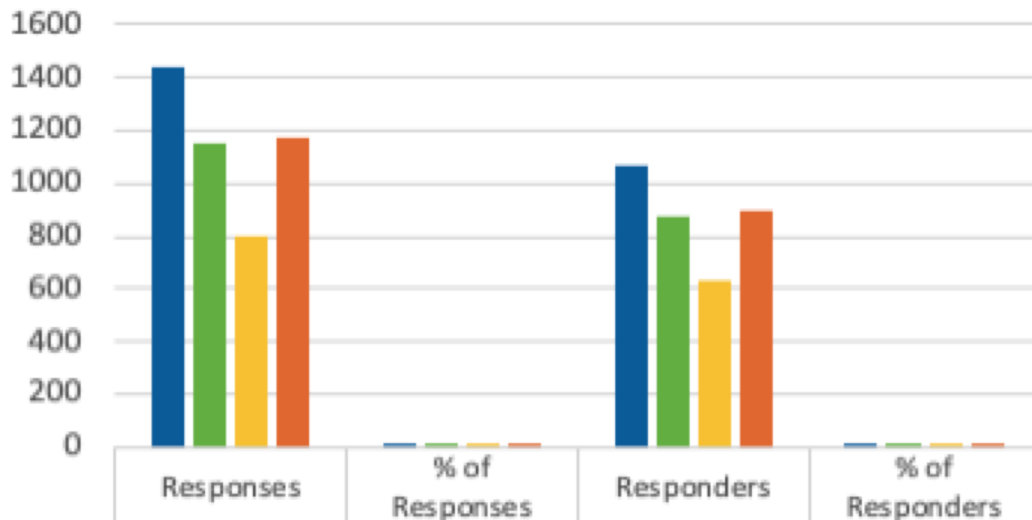
**Due to distribution errors, a third version of the survey was created and sent. This third/final version was cleared of all previous responses. It was sent to all CUSD employees and to families NOT in all-year distance learning.*

Overall Parents Readiness

56.7% responses,
56% responders
strongly agree or
agree they are
ready

Survey allowed
parents to
select more than
one grade as
applicable.

All Parents All Grades Readiness for Phase 2
(Total Responders 3470; Total Responses 4563)



	Responses	% of Responses	Responders	% of Responders
Strongly Agree En/Sp	1437	31.49%	1065	30.69%
Agree En/Sp	1149	25.18%	881	25.39%
Disagree En/Sp	800	17.53%	628	18.10%
Strogly Disagree En/Sp	1177	25.79%	896	25.82%

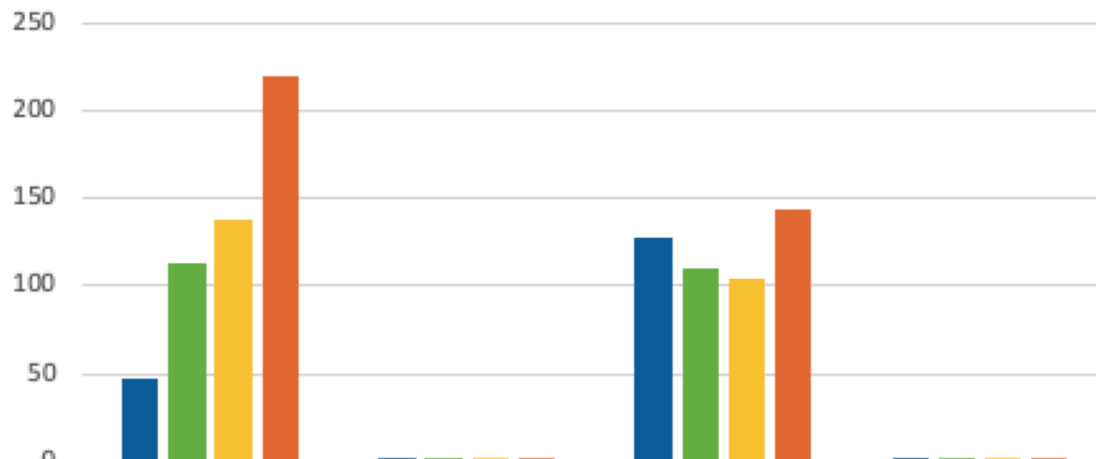
Overall Employee Readiness

31% responders,
39.6% responses
strongly agree,
agree they are
ready

Survey allowed
employees to
select more than
one grade as
applicable.

All Employees All Grades Ready for Phase 2

(Total responders 519; Responses 599)

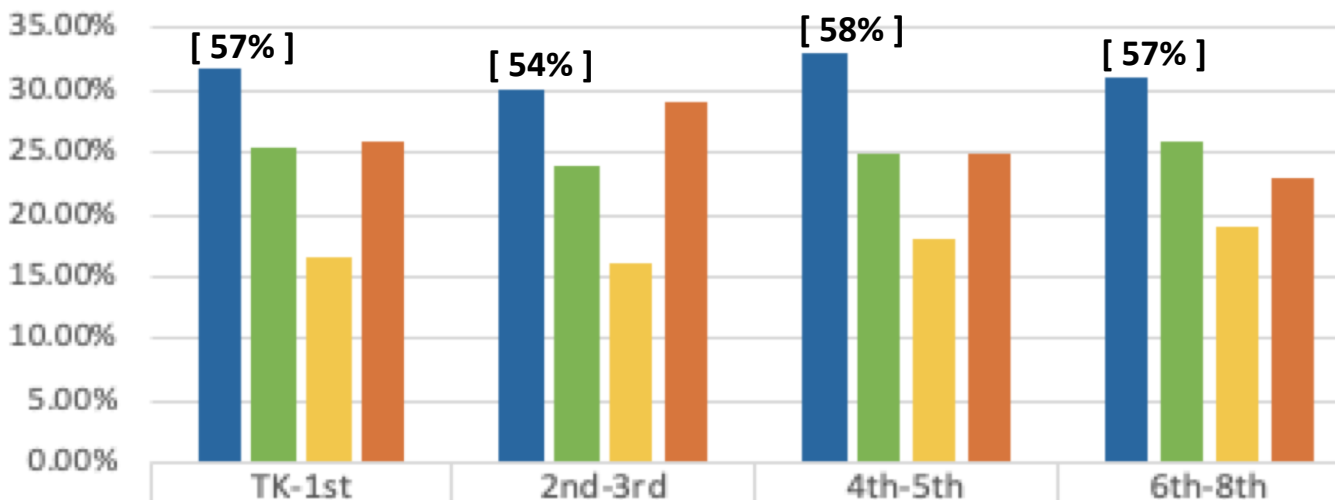


	Responders	% Responders	Responses	% Responses
Strongly agree	48	9.25%	127	21.20%
Agree	113	21.77%	110	18.36%
Disagree	138	26.59%	104	17.36%
Strongly disagree	220	42.39%	144	24.04%

Parents Ready for Phase 2 by Grade Span

*Percentages do not total 100, as responders were to select the grade(s) of their child(ren)

(Total responders 3,470; Responses 4,563)*

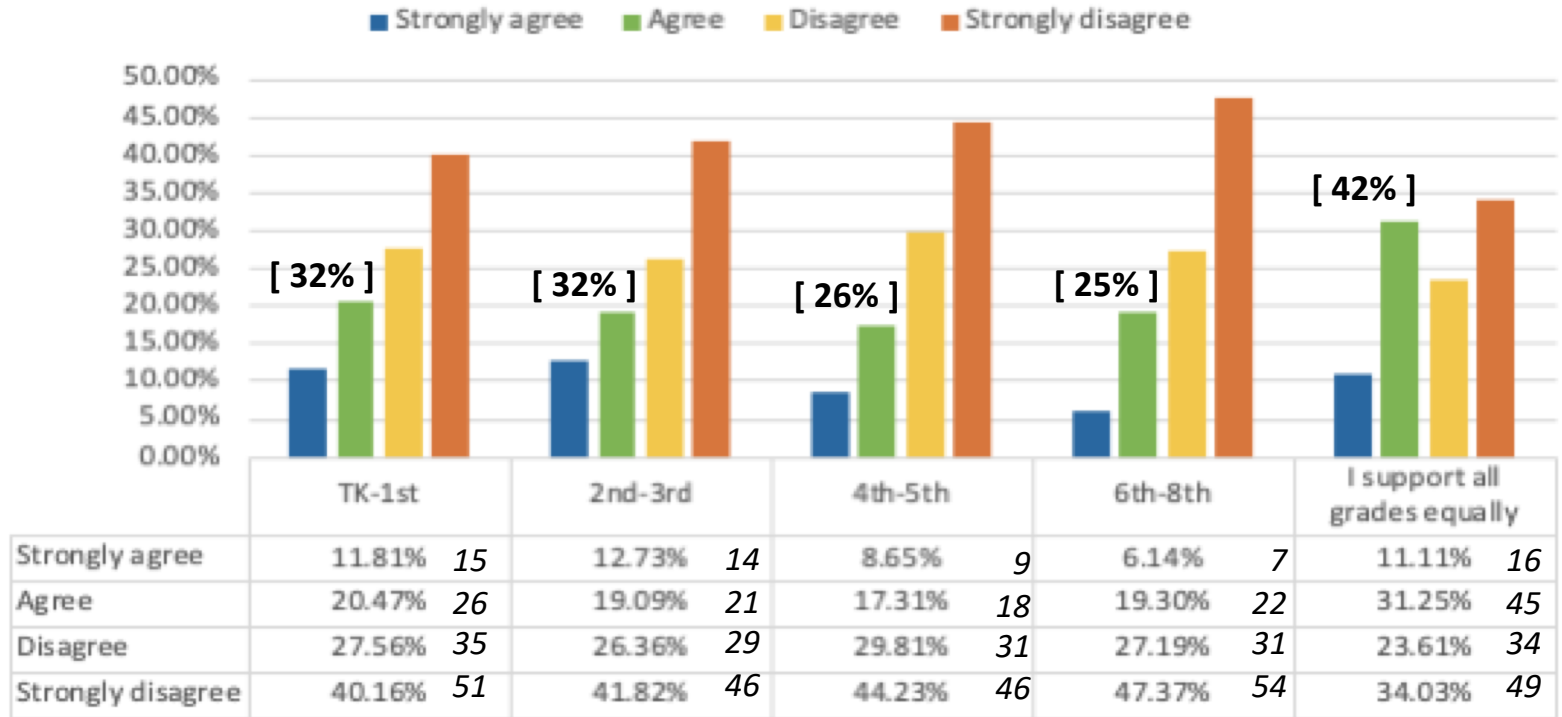


	TK-1st	2nd-3rd	4th-5th	6th-8th	Total N
Strongly agree	31.80%	30.00%	33.00%	31.00%	1065
Agree	25.50%	24.00%	25.00%	26.00%	881
Disagree	16.50%	16.00%	18.00%	19.00%	628
Strongly disagree	26.00%	29.00%	25.00%	23.00%	896

Employees Ready for Phase 2 by Grade Span

*Some responders selected more than one grade span

(Total responders: 519; Responses: 599)



Surveyed Private Schools

- **Canyon Heights** (enrollment 181)
 - Class size 15-20
 - Preschool -1st - **on campus now**
 - 2-8 - **Oct 12** ~ add grade level each week
- **San Jose Christian** (enrollment 156)
 - Class size 15-18
 - TK-8 - September 28
- **St. Leo The Great** (enrollment 190)
 - Class size 15-20
 - K-2 - pending reopening plan approval in next few weeks
 - 2-8 - week by week grade level added
- **St. Lucy's** (enrollment 275)
 - Class size 16
 - Pre K - on campus now
 - K-8 - **November 9** tentative
- **St. Martin of Tours** (enrollment 336)
 - Class size 18
 - Wednesday - distance learning for all grades
 - TK-K - **October 13** all day
 - 1-2 - October 19 am/pm schedule
 - 3-5 - October 26 am/pm schedule
 - 6-8 - November 2 two days/week
- **Valley Christian Elementary** (enrollment 459)
 - **September 28**
 - K-1 4 days/week, 1 day hybrid
 - 2-5 Hybrid - alternating days on campus
 - Middle School** (enrollment 710)
 - 6-8 Hybrid - alternating days on campus

Reopening Work Group Meeting 9.30.20

Goal of meeting:

- Share stakeholder survey data
- Create a plan that will support our youngest/neediest learners between now and full implementation of Phase 2
 - Group broke into 3 smaller teams that worked to generate innovative ideas for what it could look like to bring small groups of students back to campuses
 - Ideas were shared with the larger group
 - A sub-group was created to generate a guide for schools that bring back students for some in-person instruction.

District Reopening Committee convened on 10.13.20

(A challenge for this work was conference week, meaning no meetings could be called 10/5 - 10/9)

Current Support for Neediest Learners

- Virtual Supports: Office Hours, Targeted Instruction Groups, Counseling

In-Person Supports:

- Learning Labs
- Reading Boot Camps
- Special Education In-Person Assessments
- Sherman Oaks and CSI Providing Special Education In-Person Support
- Behavior Specialists Providing Specialized Learning Lab

The Plan Recommendations

A subgroup of the Reopening Committee provided feedback on this plan

1. Individual schools will identify teachers who want to bring students back for in-person instruction (volunteer basis)
2. Teachers will identify which students will be invited based on the following criteria:
 - a. Academically struggling (2 or more grade levels below in Reading and/or Math)
 - b. Youngest learners challenged by remote platform
 - c. English Language Learners, Foster Youth, Homeless
 - d. Lack of engagement during distance learning
 - e. Social emotional distress or social isolation issues
 - f. Special Education students with lack of progress on IEP goals

The Plan Recommendations (continued)

4. Share the work group suggestions with each school leader to be discussed and planned at the site level.
5. Sites need to follow these steps to have a cohort on campus for in-person instruction.

Loose/Tights for Planning

Loose

- The academic content area for instruction. The social emotional learning skills being focused on
- Students can blend with another class and be one cohort
- The weekly time designated for in person instruction. (hours/days)
- Use of other learning spaces in addition to classrooms

Tight

- Students invited for a specific purpose: Remedial Academic Support or Social Emotional Groups
- Group size must not exceed 12 students
- Hours/Days must be the same weekly for parent consistency
- Classrooms/learning spaces must be set up following all safety guidelines

SpEd Subcommittee Recommendations

Criteria

- Lack of engagement during distance learning
- Social-emotional indicators
- Attendance
- Staff choice
- Parent choice

Innovative solutions: In-person support

- **Assessments**
 - Staff choice – virtual or in-person
 - Accommodations/Modifications based on student needs
- **Models considered**
 - Student Cohorts A and B (small groups)
 - Individual 1:1 instruction and support
 - Social Skills/Behavioral support
 - Related services in small groups and/or 1:1
 - Targeted small group instruction

Meetings Dates: 7-16, 7-21, 7-28, 8-7 and 10-14

Messaging to the Community

We are committed to bringing back our most struggling learners.

We are committed to staff and student safety. Not all staff and families feel safe coming back at this time.

Equity means giving students what they need, not giving all students the same thing.

Parents have choice if they do not want their students to return *before* Phase 2

No student will come back full time, or even full days, at this time.

We are not requiring teachers to return during this phase.

We are not discouraging teachers who wish to bring back students for in-person instruction before Phase 2

We are supporting our SpEd staff who wish to do in-person assessments and instruction

Timeline



- School site leadership teams will discuss and finalize their plans to support neediest students between October 12-30
- Communication to families of students invited for any in-person support will begin at least a week before in-person instruction is scheduled

Reopening Work Group Meeting 10.13.20

- Reviewed proposed plan developed by subcommittee
 - Each school will continue this work with their staff to provide MTSS
- Looked at three potential schedules for Phase 2 for elementary schools (both middle schools are collaborating with each other & teams)
- Taking two plans back to respective sites to get input on preferred schedules
- Will reconvene on 10.20.20 to determine schedule for Phase 2

Recent Updates

- Looking into providing COVID testing at school/district sites with *Curative* to provide convenient and timely results
 - Bill all CA Insurance providers and ACA
- Santa Clara County moved to the less restrictive Orange Tier on Oct. 14

Questions & Clarifications

